

shape

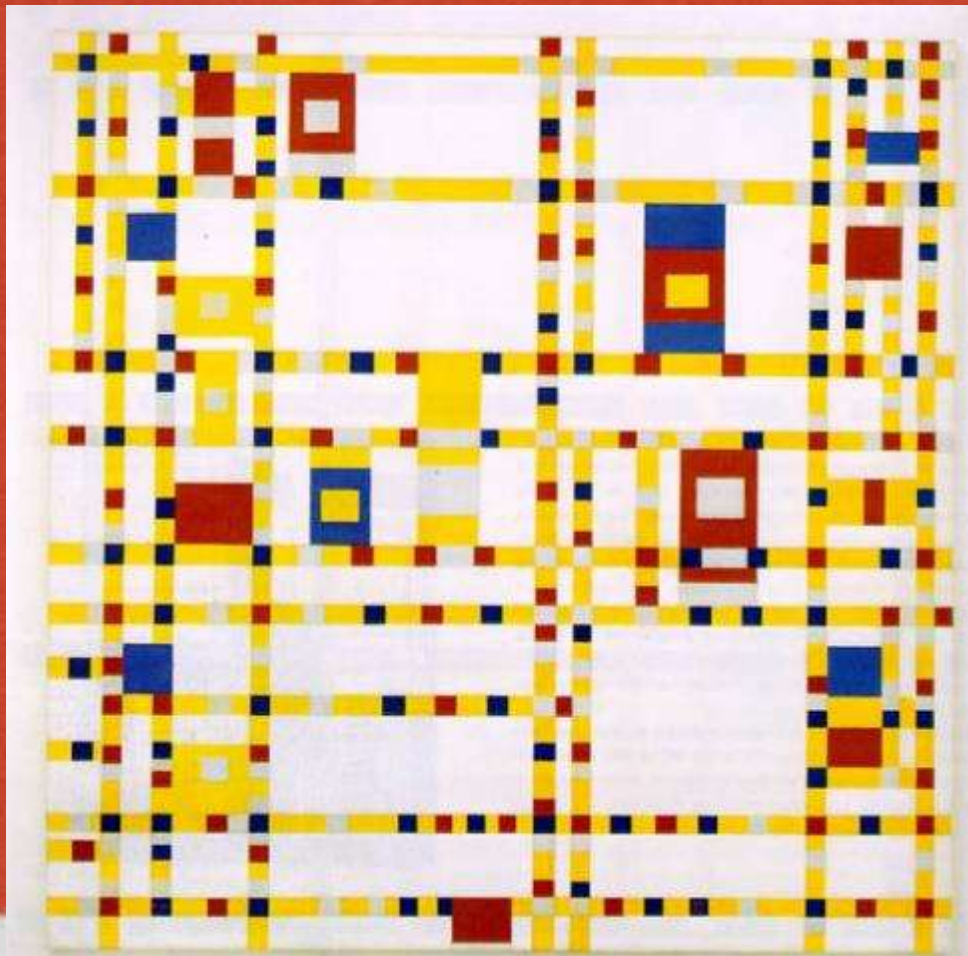


THE ELEMENT OF SHAPE

- Shape is a two-dimensional area that is defined in some way.
- Shapes can be defined by a line, contrasting colors or contrasting textures.
- There are three types of shape:
 1. **Geometric**
 2. **Organic**
 3. **Free-Form**

GEOMETRIC SHAPE: uses mathematical formula or angular shapes.

Piet Mondrian uses geometric shape in *Broadway Boogie* to symbolize the setup of the New York city streets.



- In Pablo Picasso's *Three Musicians*, geometric shape is used to show human forms.

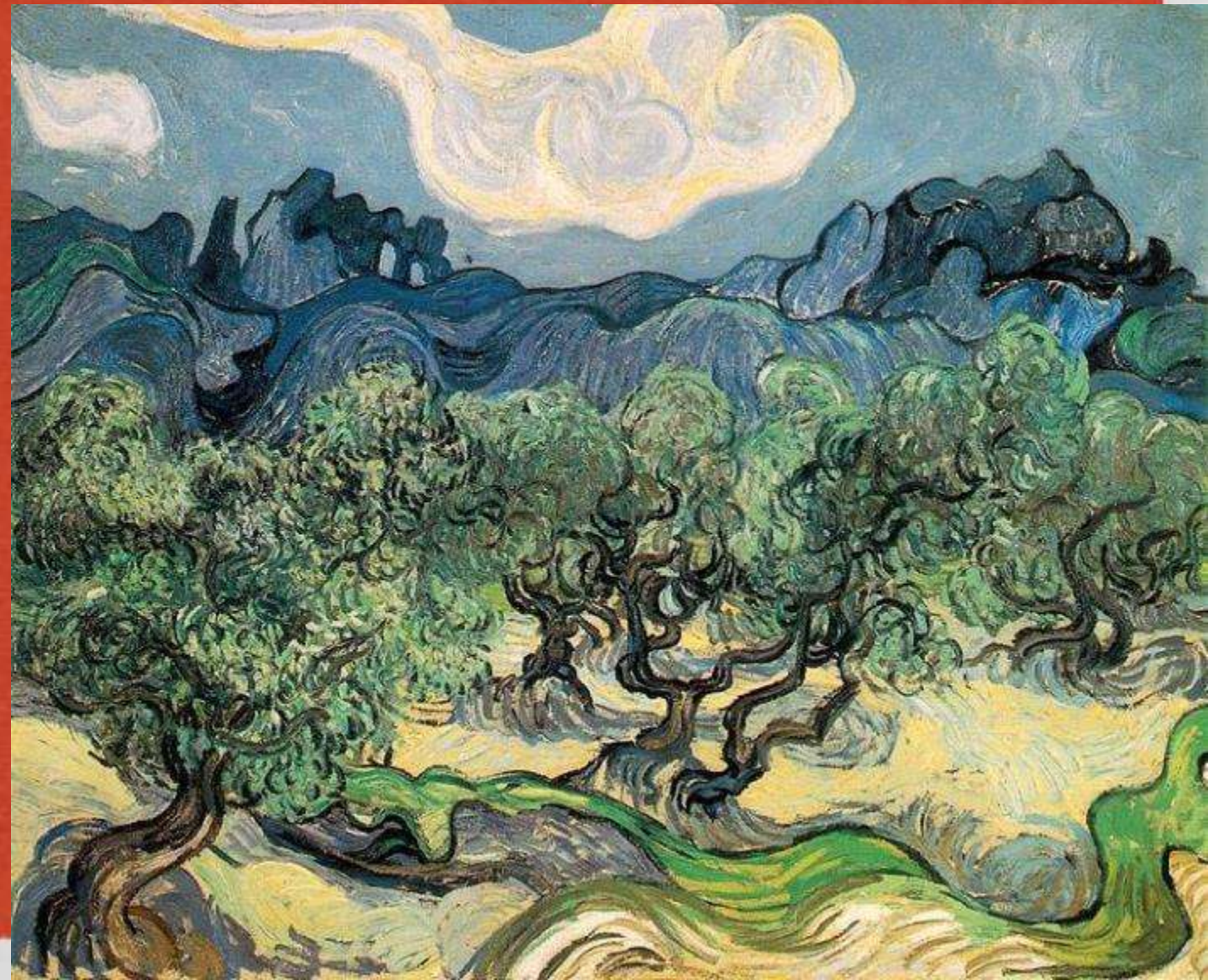


ORGANIC SHAPE: represents objects found in nature.

In *Hibiscus with Plumeria*, Georgia O'Keefe uses soft, organic shape to represent the flowers.



- Vincent van Gogh uses flowing, organic shape to represent *The Olive Trees*.



FREE-FORM SHAPE: abstract and unidentifiable shapes.

- Although the shapes in Joan Miro's *Hand Catching a Bird* represent natural forms, they are considered free-form because of their lack of immediate identification.



The basic shapes...

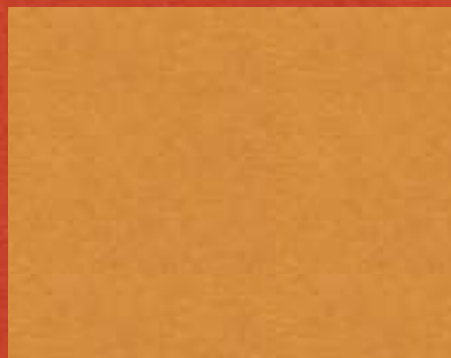


Using shapes to draw

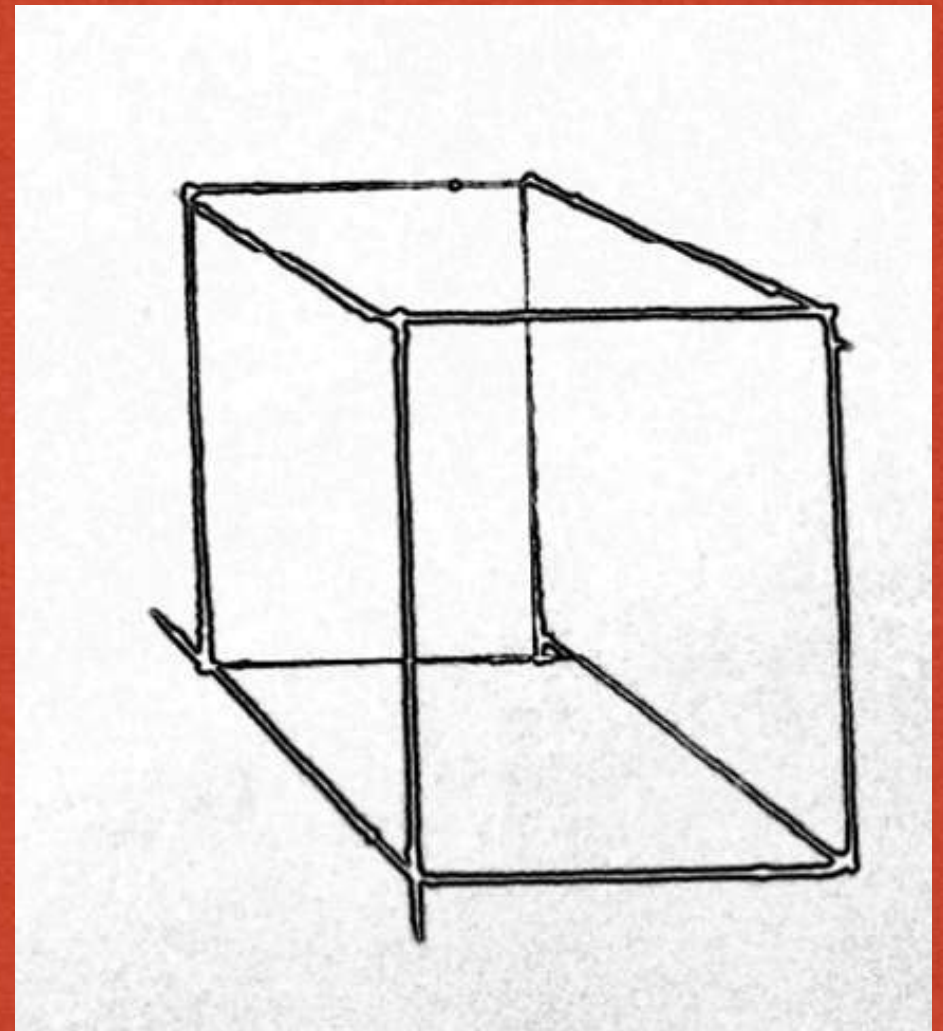
- Every thing you see can be broken into shapes. The shapes of the objects and the shapes of the negative space.

Shape is 2d

- This is 2d how would you make it 3d?



Square to box- notice the
parallel lines.

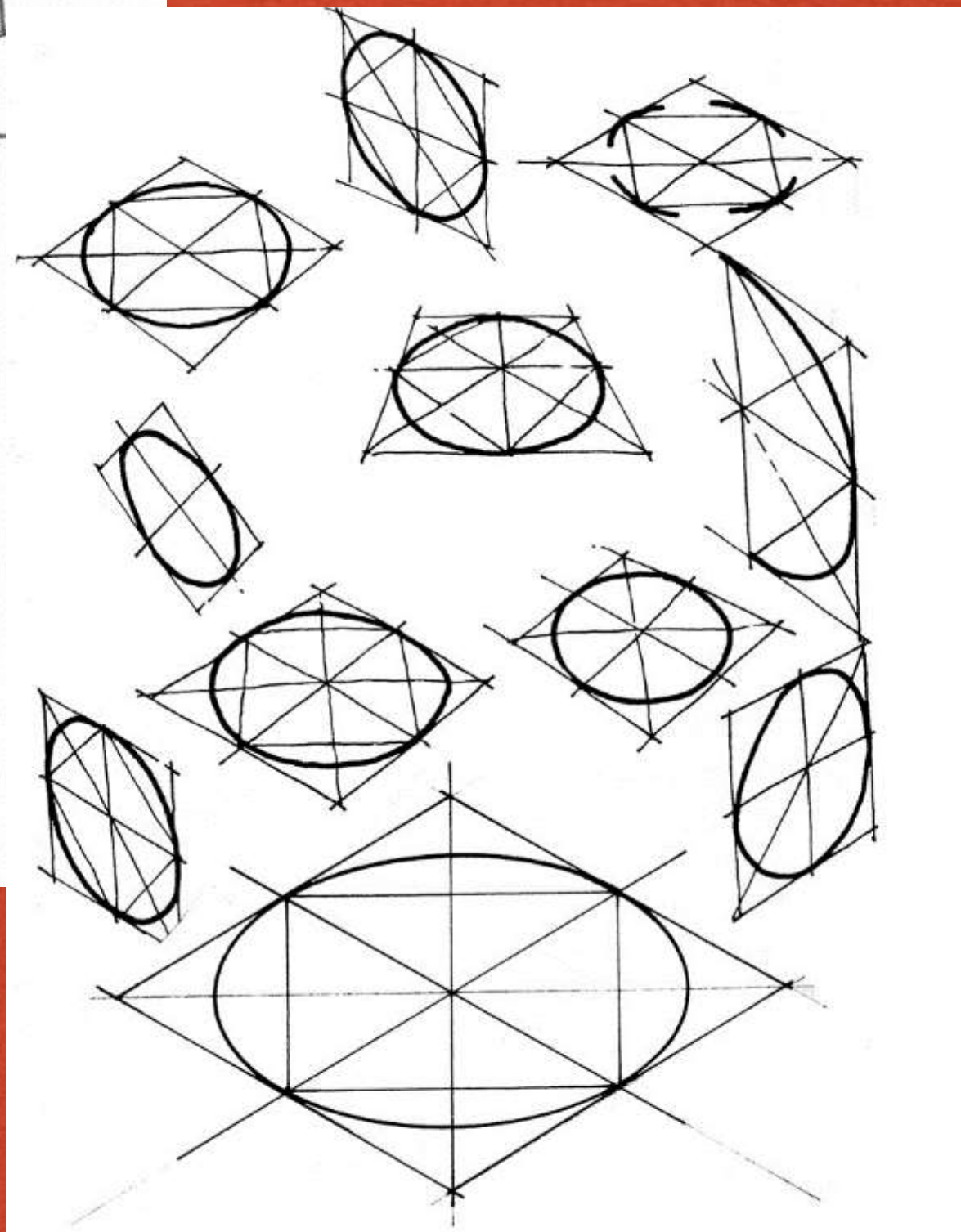
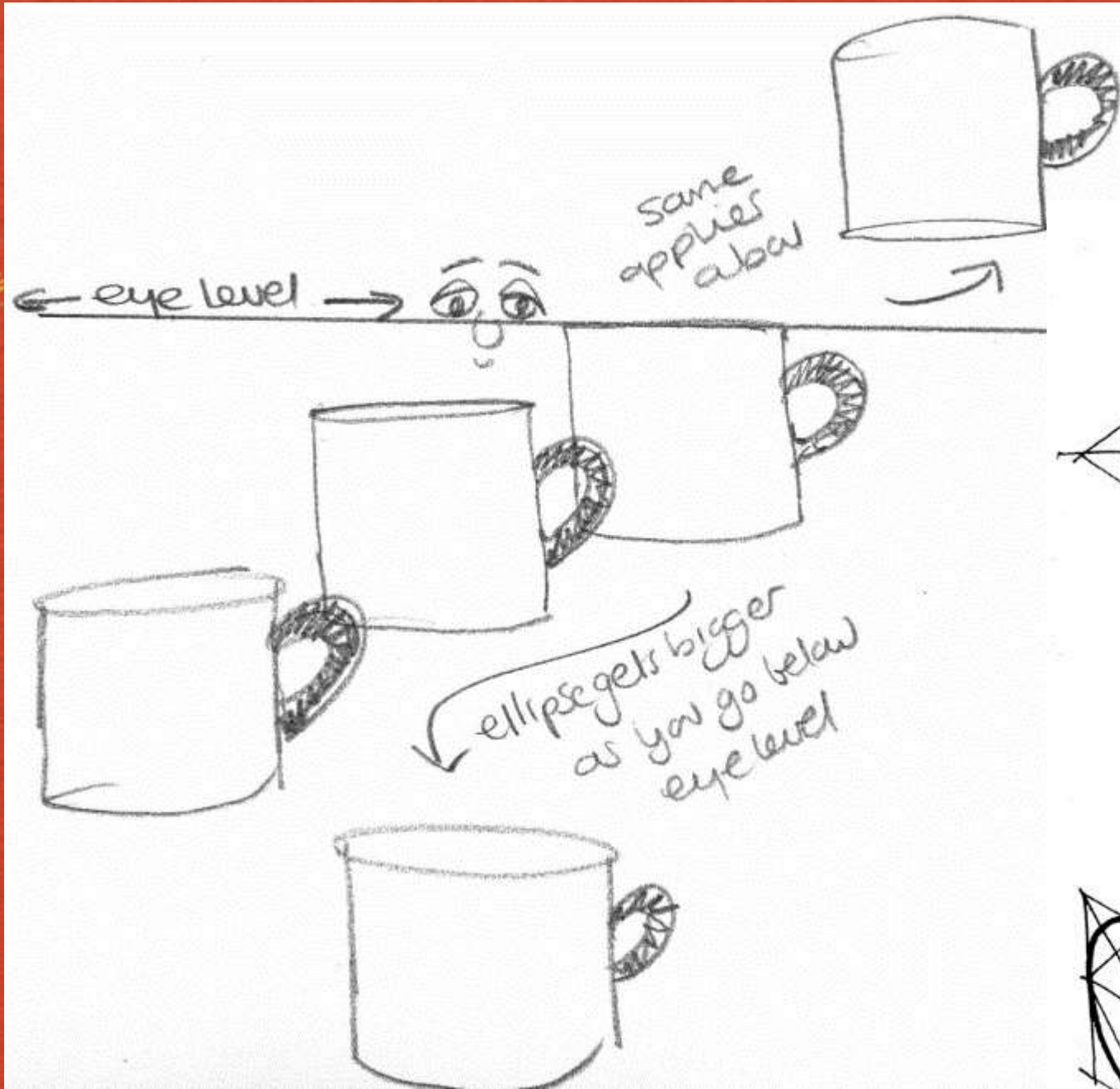


Where do you see circles?

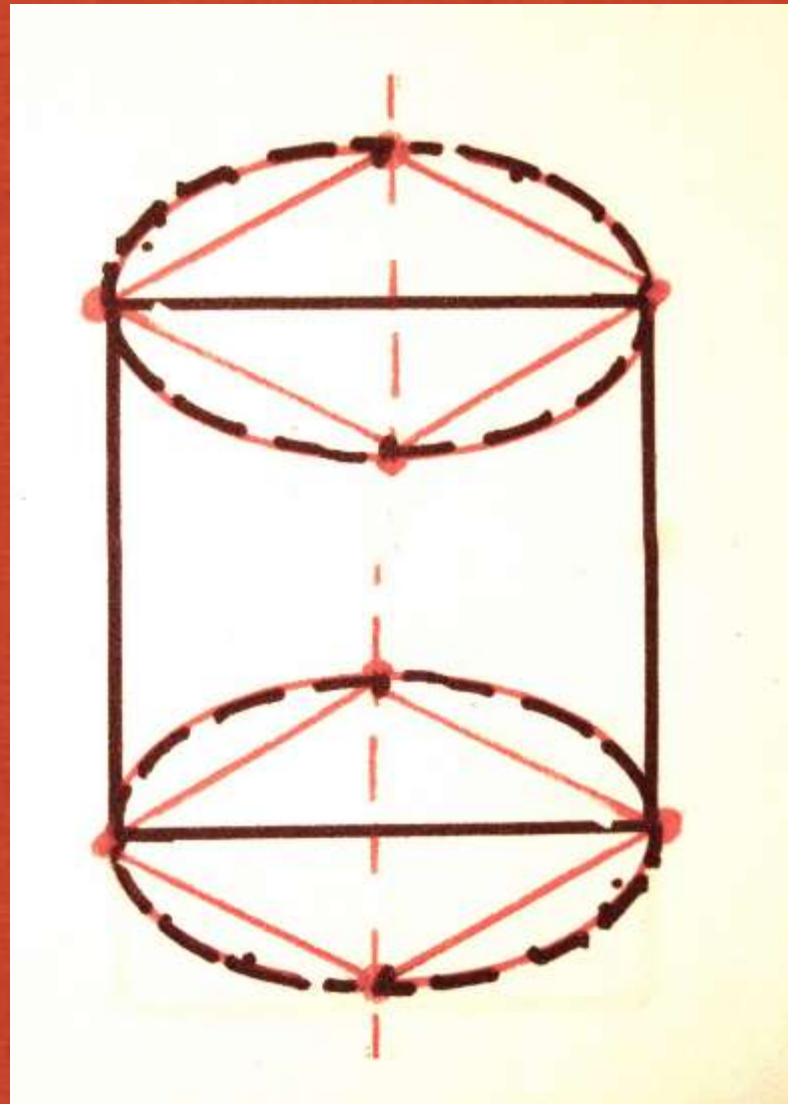


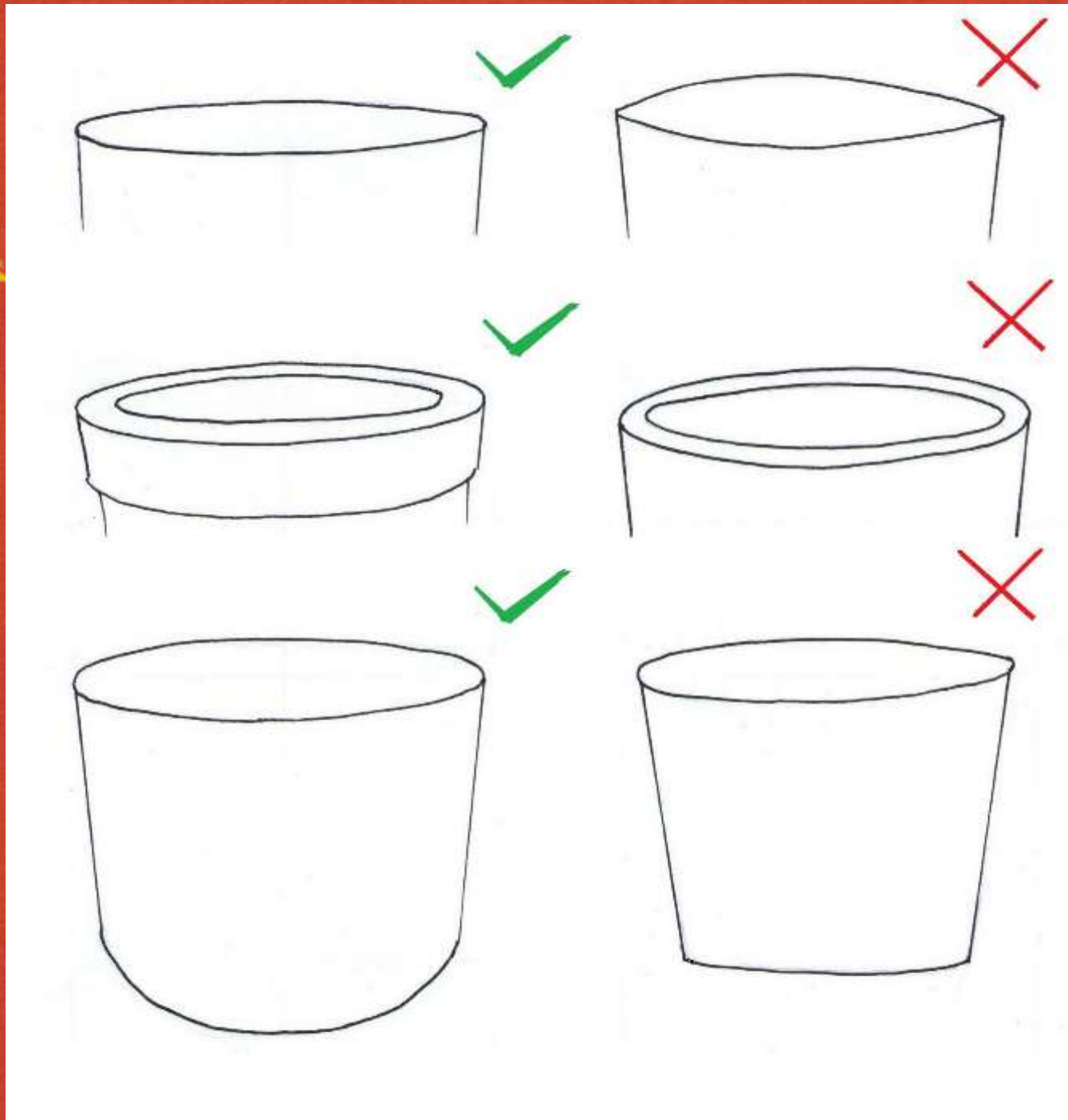
Circles are used on a lot of objects.

- When your perspective (your point of view) changes so does the shapes.
- If you look directly on top of a can it is a circle, as you move back, it is still a circle but its form has slightly changed. These are ellipses



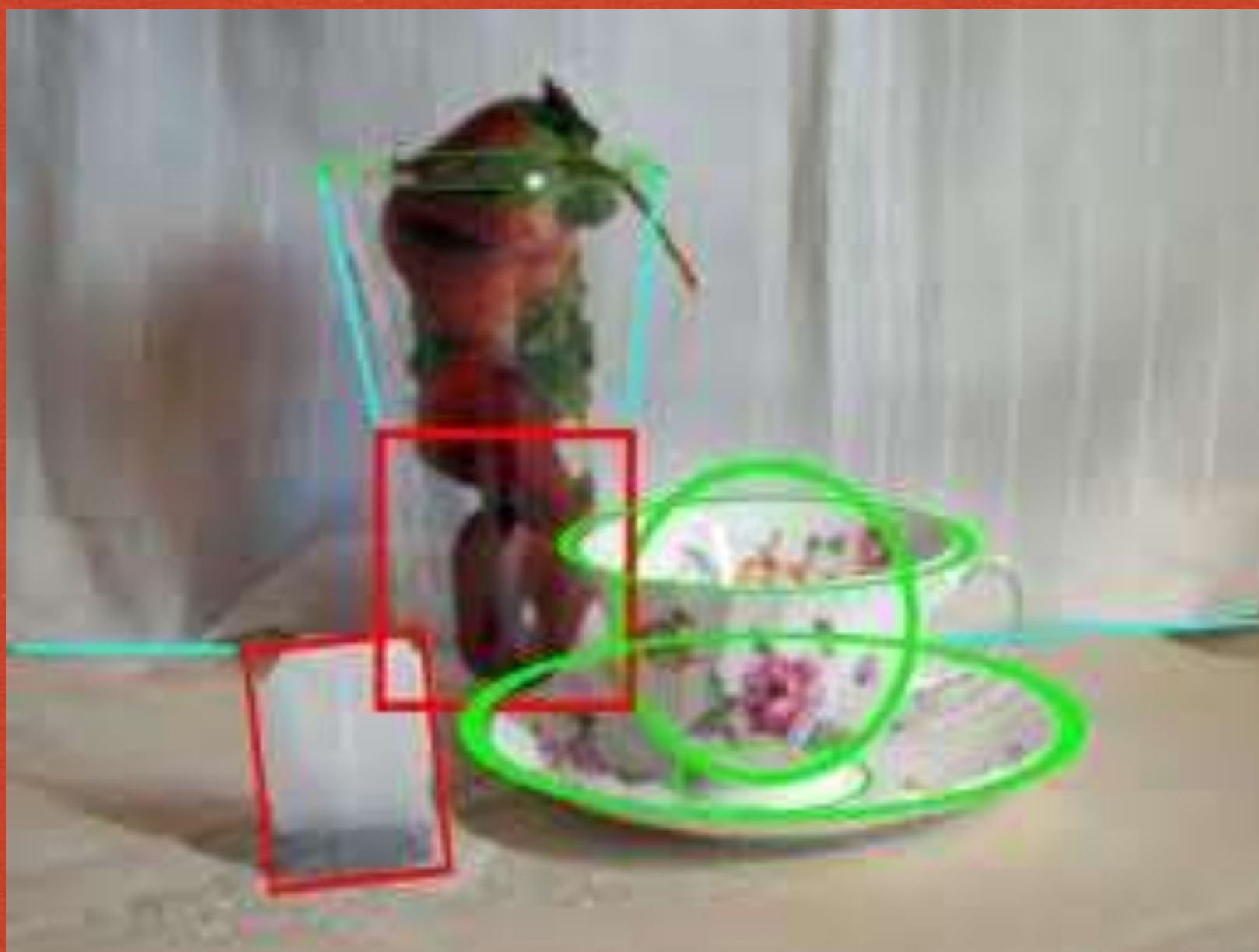
When you look at a can, you
can not see the bottom but
you know the bottom is round



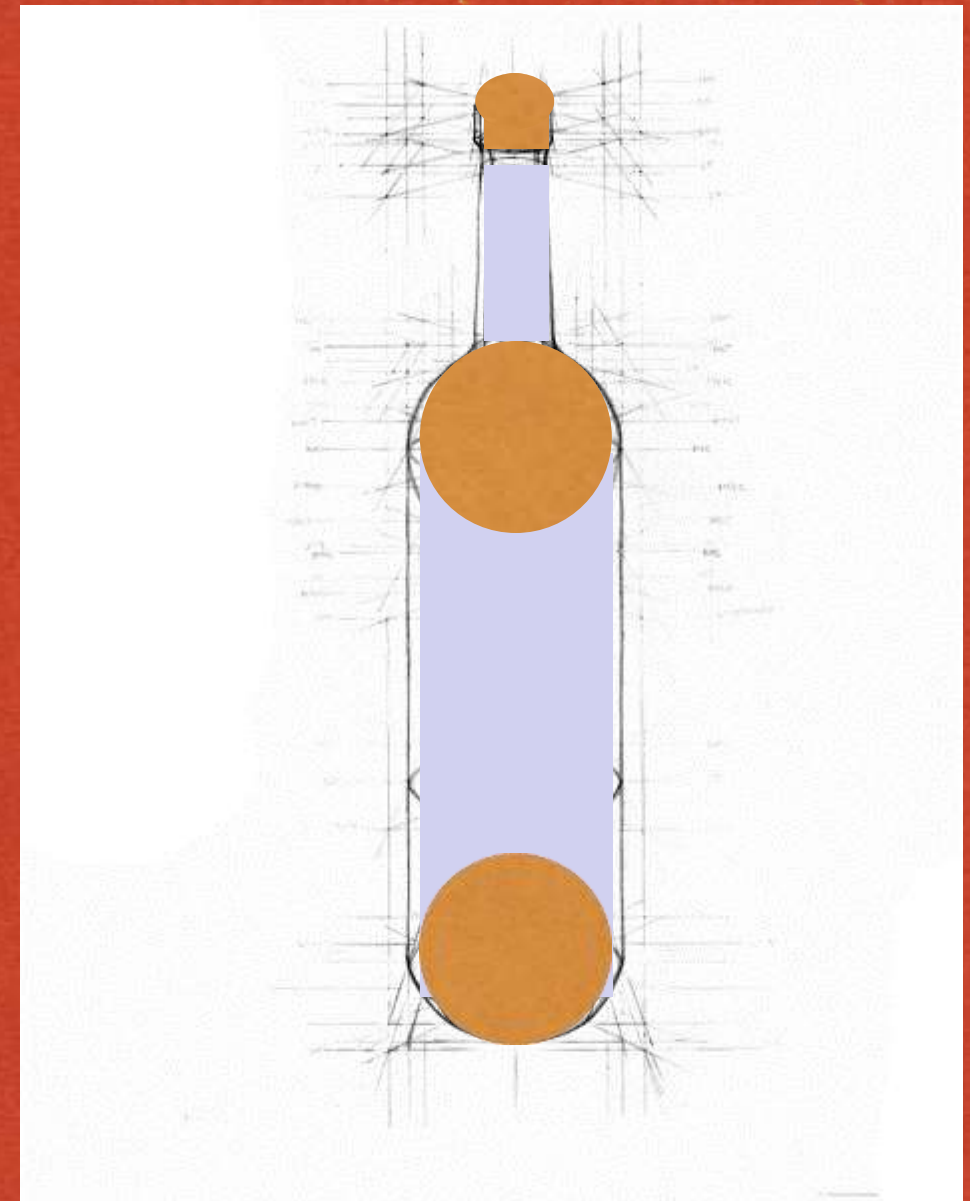
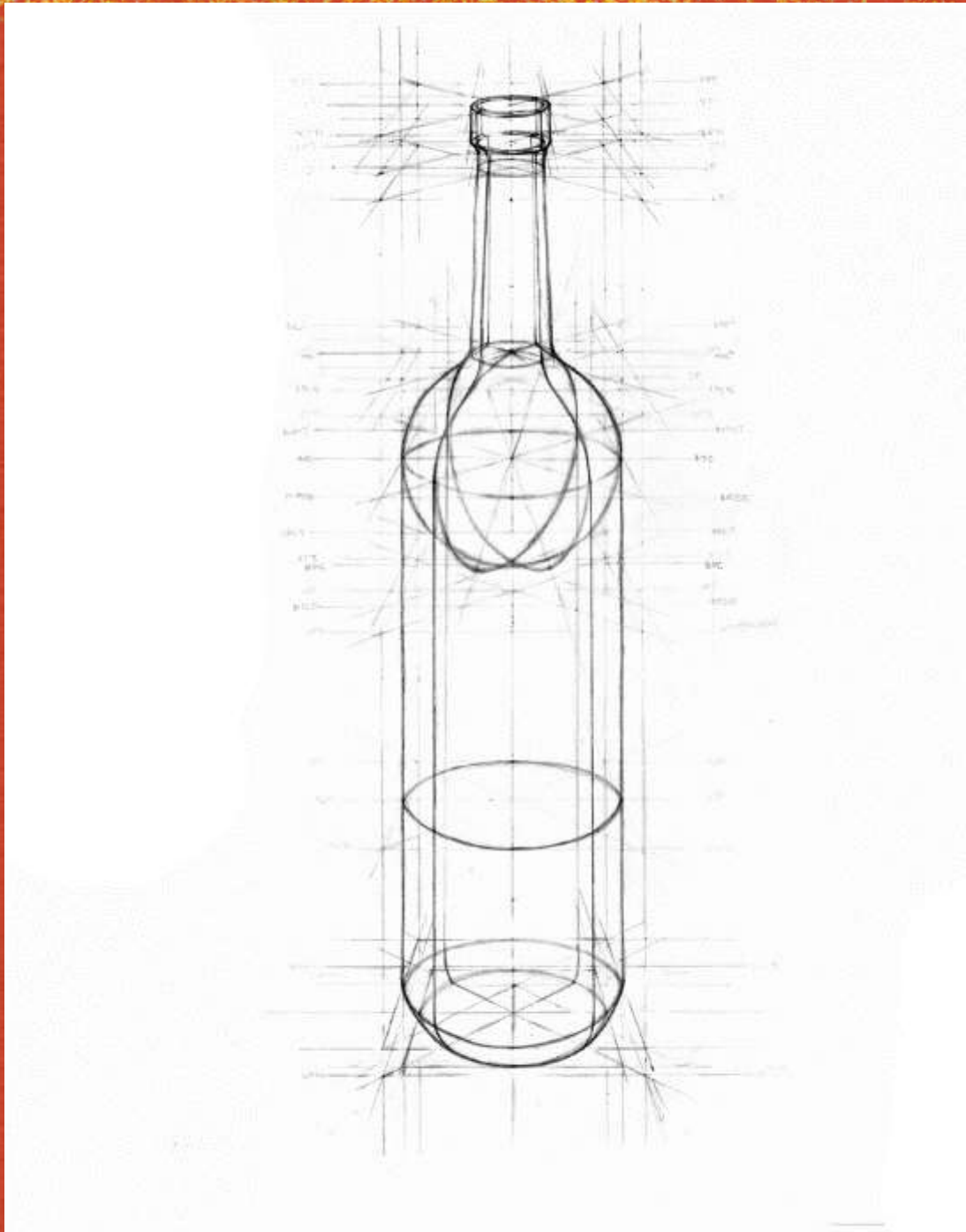


Handwritten text in yellow marker, partially obscured and illegible.

Combining Basic Shapes



Combining shapes in an object*



Now...

- I am about to show you a series of photos, we will spend about 10 minutes on each photo. You will be expected to draw each image and break it down into basic shapes. You want to then add in the details and work on then cleaning up your lines.











As things go back in space

- The shape will adjust. Just like the ellipses adjust.